

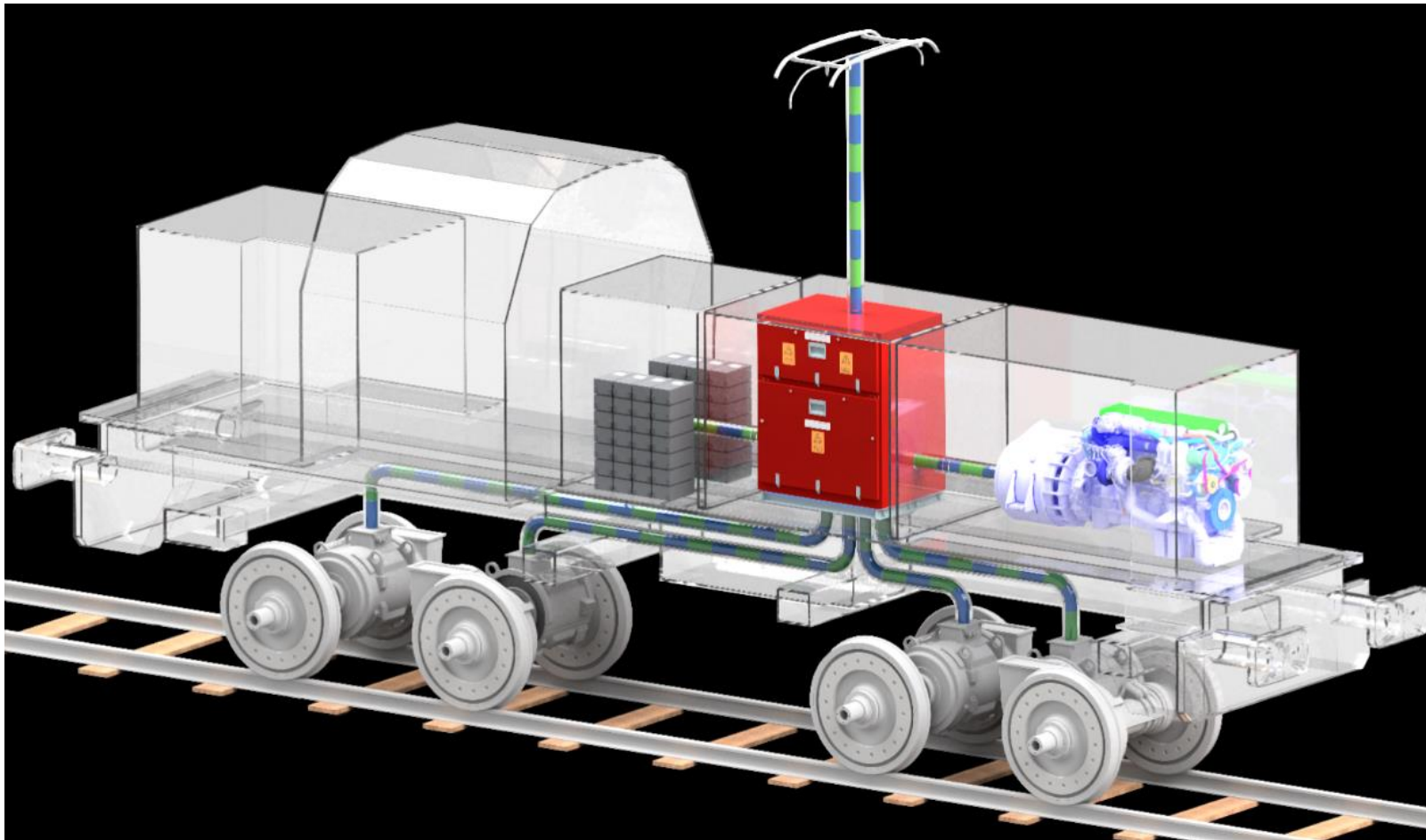
STROMABNEHMER FÜR HYBRID- MITTELFÜHRERHAUS-LOKOMOTIVEN



Mileva Einstein

CHRISTINA PREM, FREDRIK SCHMITT, KEVIN FEIGE, JAN THÄTER,
MARTIN RÜCHEL, MAXIMILIAN STÜWE, MERLE PAWLAK,
MICHAEL KROPA, MICA BURKAMP, NIKLAS WERNER,
MICHELE MARKOV, TAREK ALKTIFAN

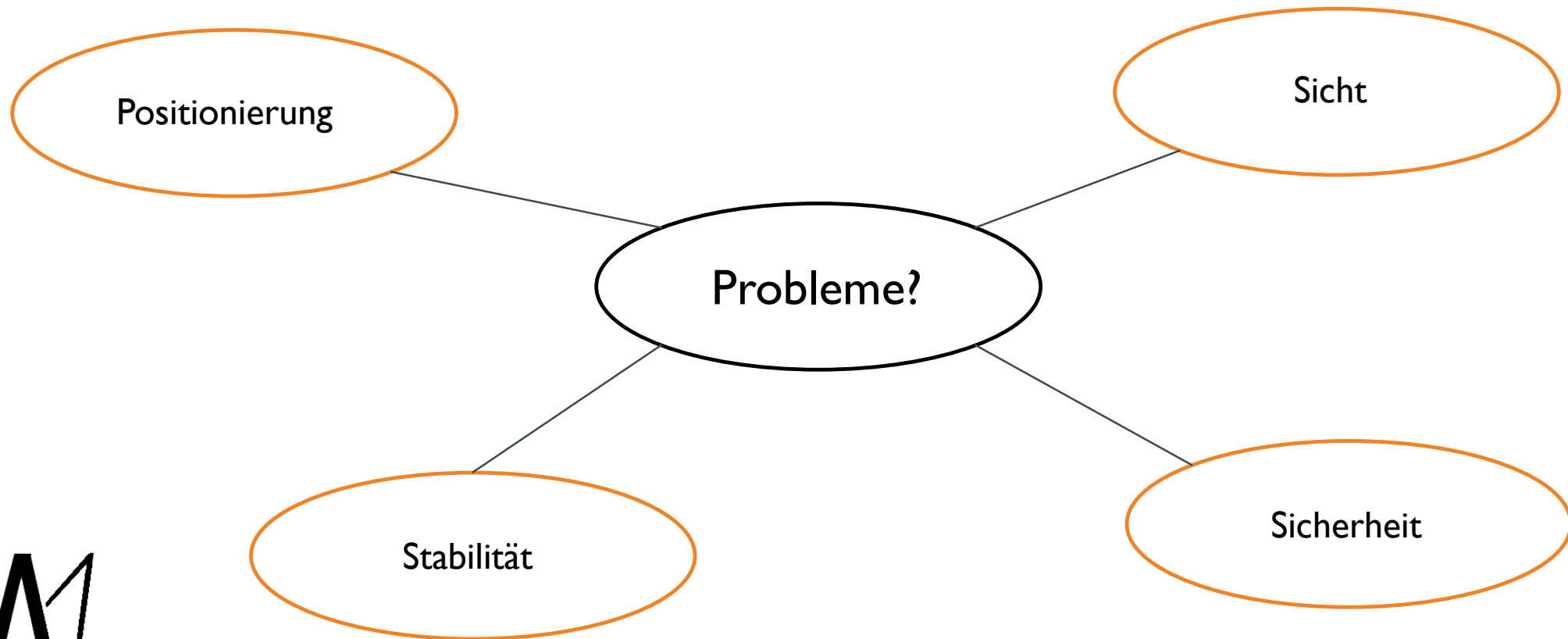
DIE AUFGABE

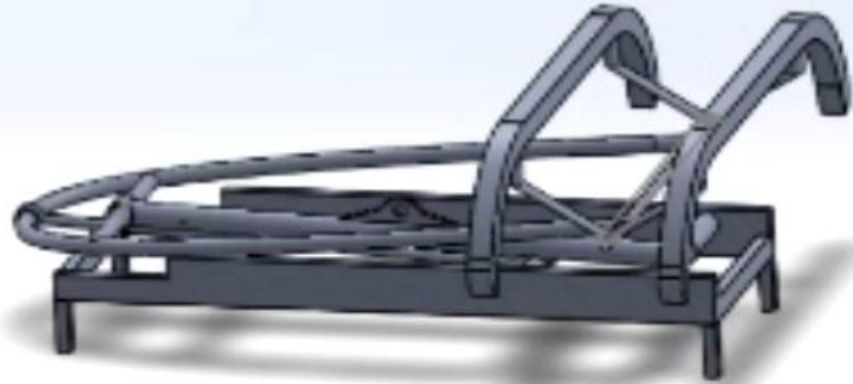


Quelle: Aufgabenskript 2018, Toshiba



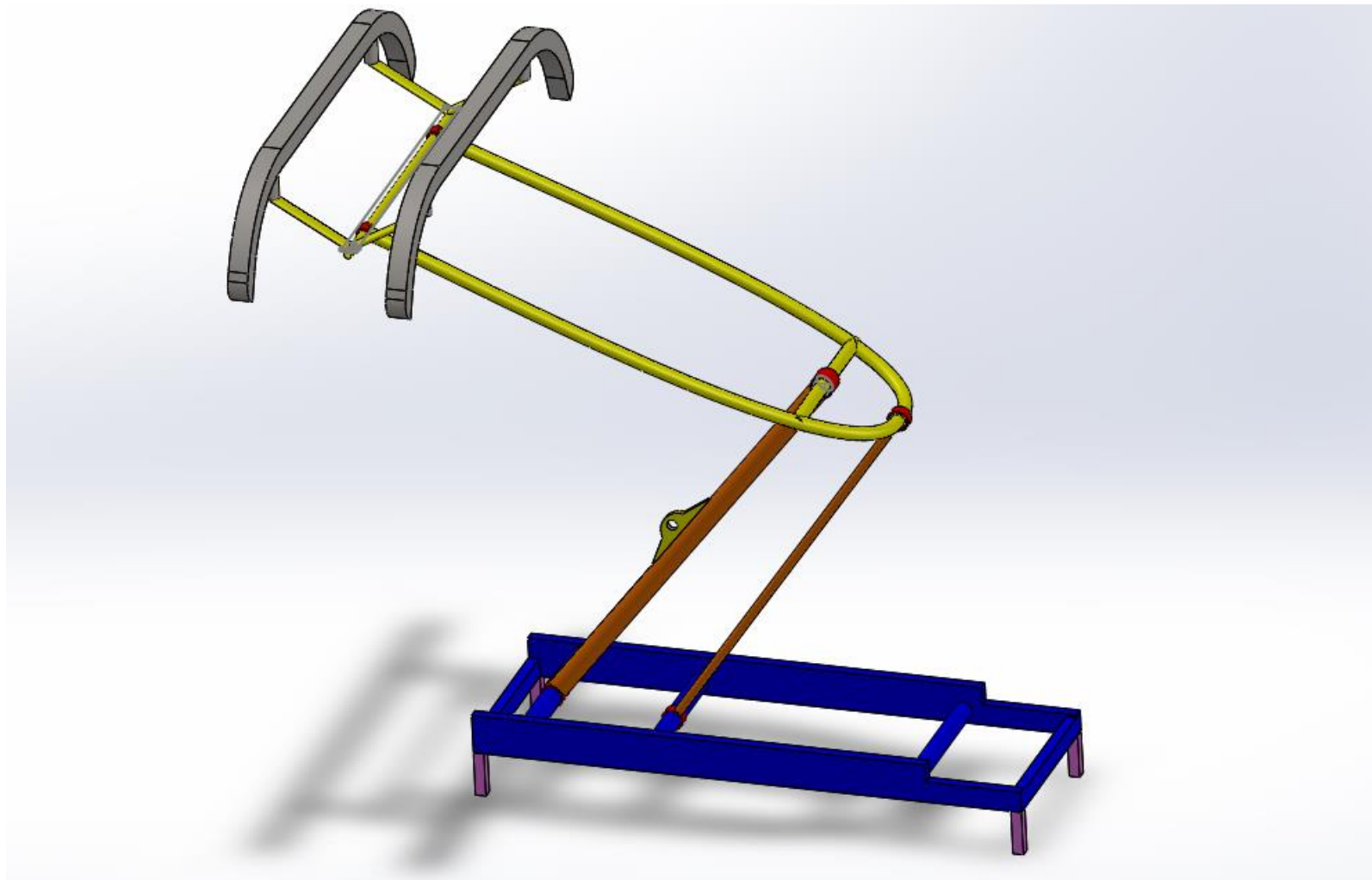
DIE AUFGABE



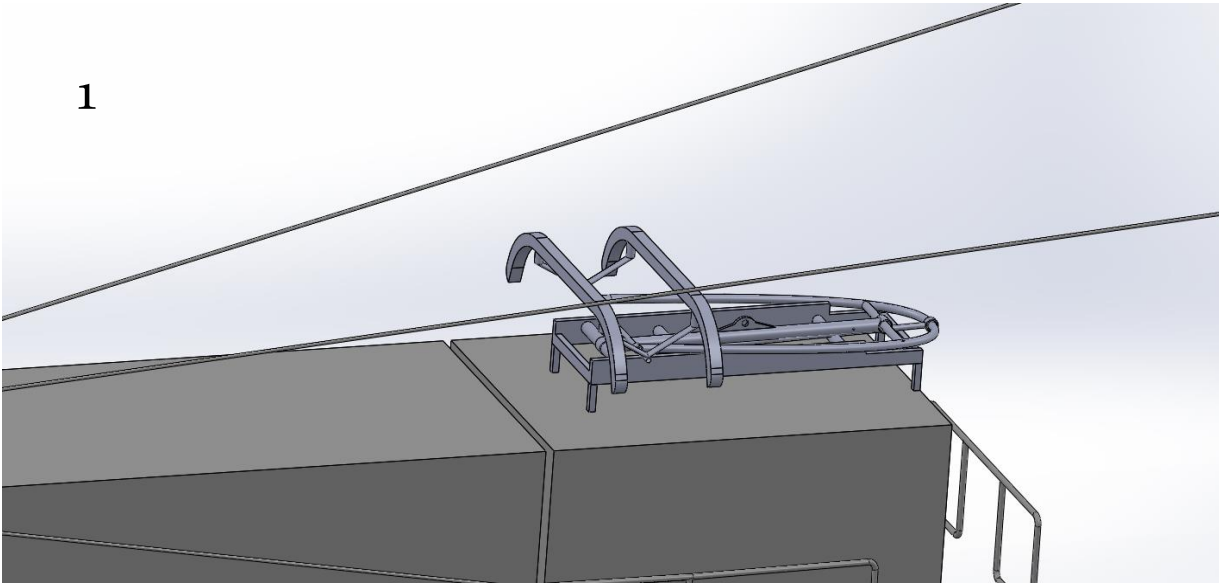


DIE KONSTRUKTION

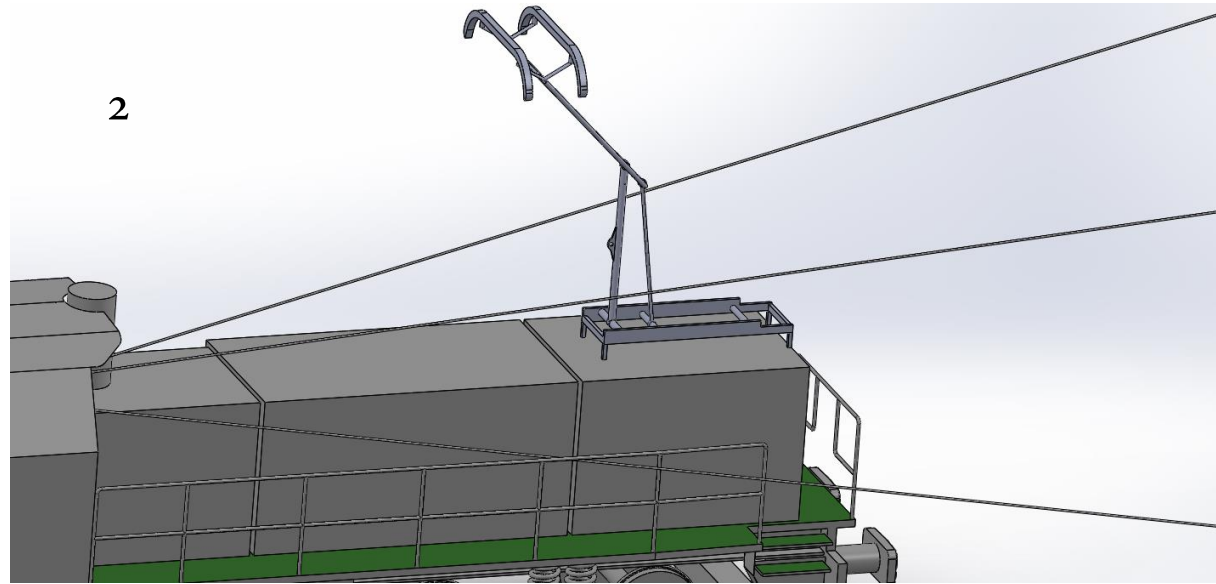
- Aluminium
- Edelstahl
- Stahl/Edelstahl
- Carbon
- Isolatoren



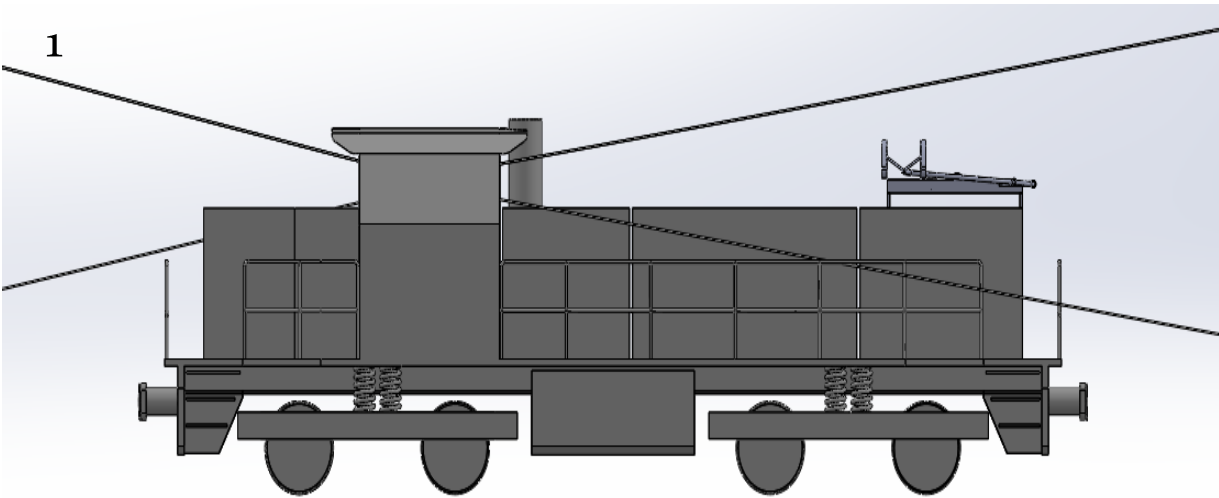
1



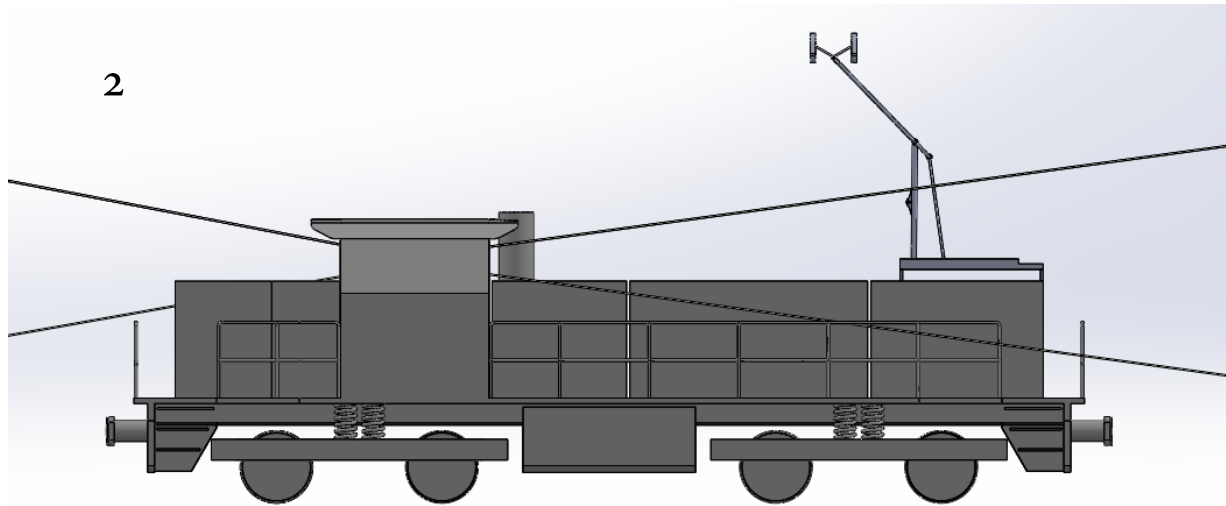
2



1

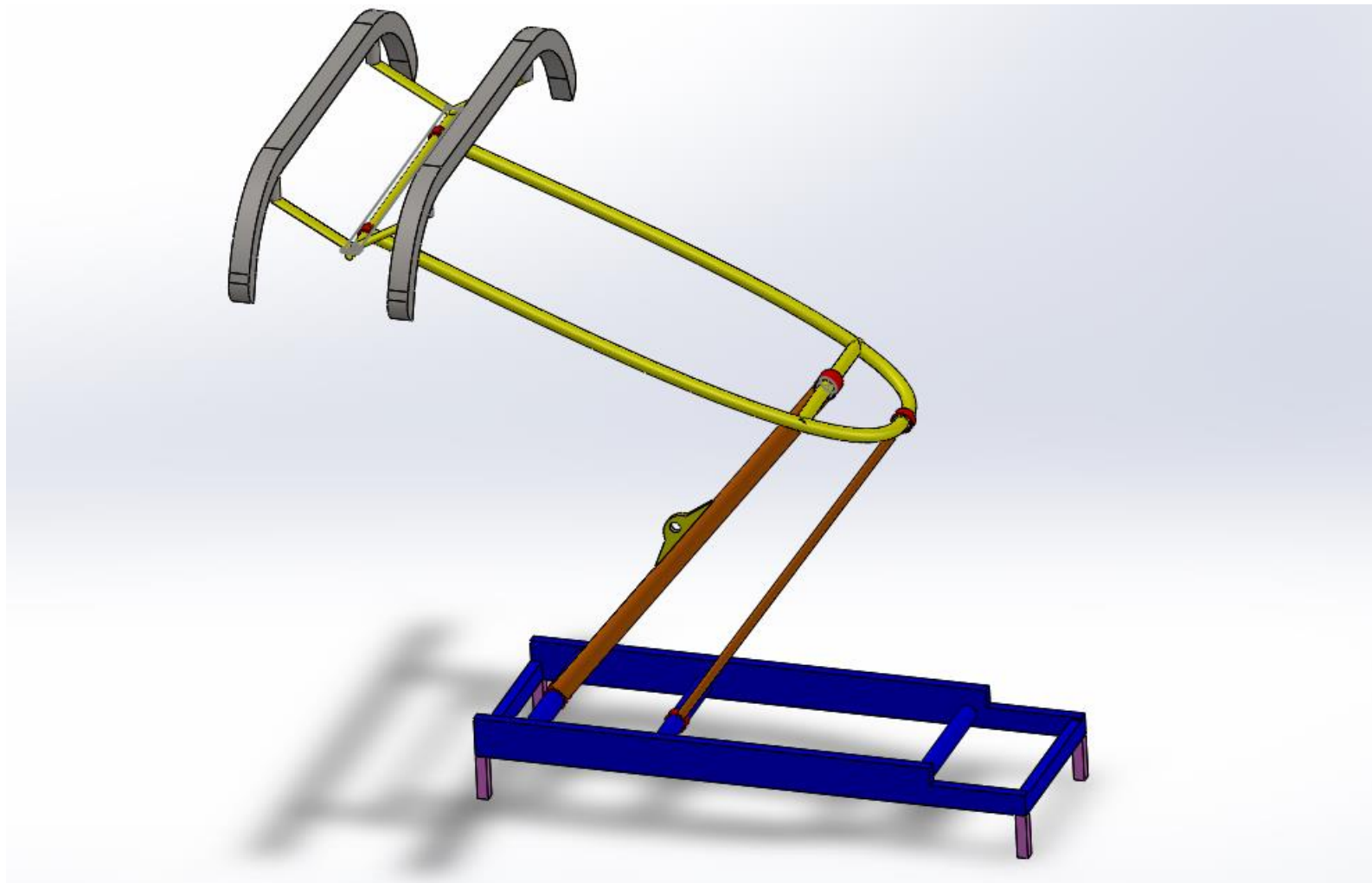


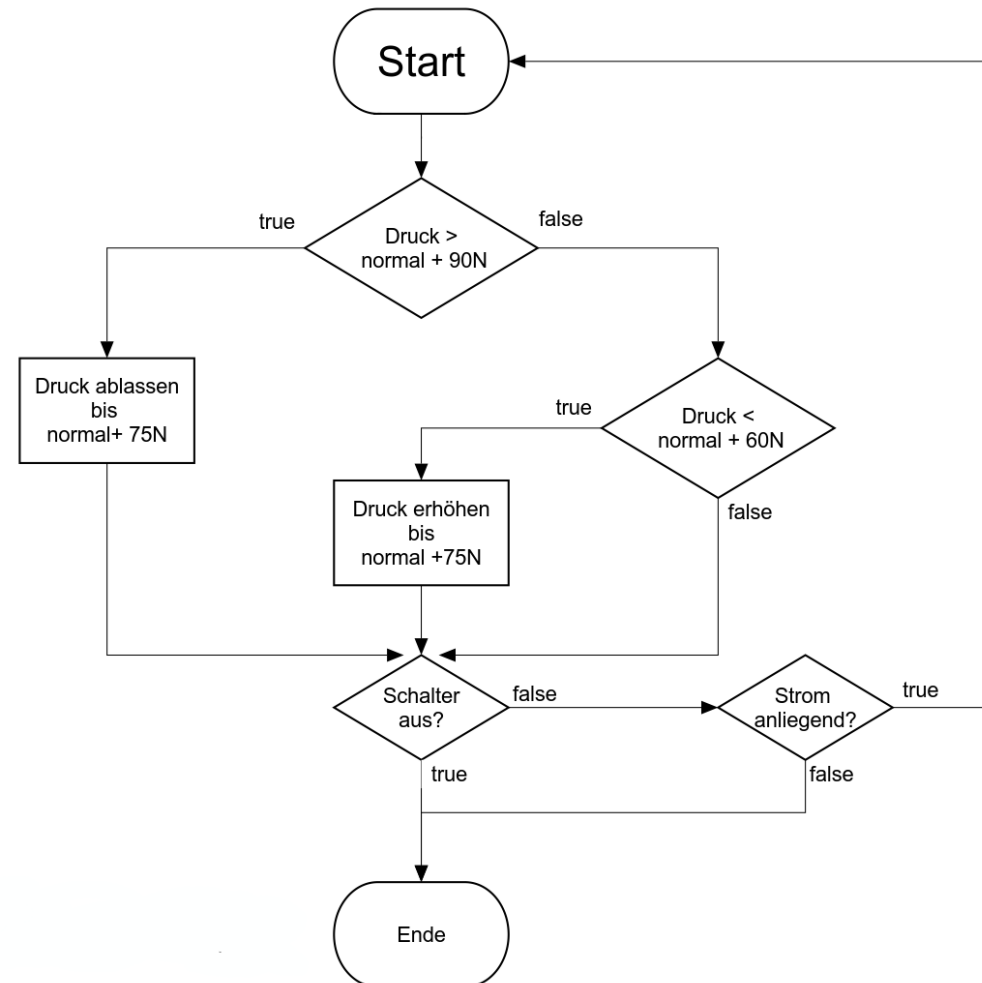
2



DIE KONSTRUKTION

- Aluminium
- Edelstahl
- Stahl/Edelstahl
- Carbon
- Isolatoren





ZUSAMMENFASSUNG: UNSER PRODUKT

- Kostengünstige Innovation
- Leichte Werkstoffe (Aluminium, CFK) → Gewichtsvorteil
- Automatisierung
- Nachrüstbarkeit: Nachhybridisierung möglich

