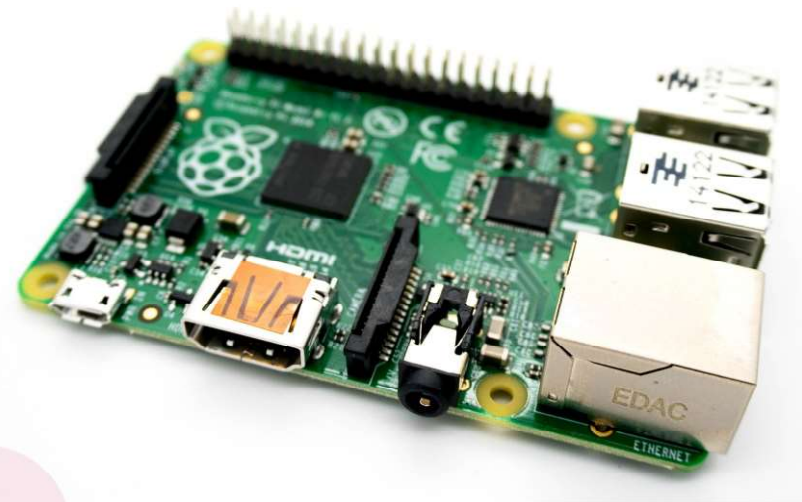
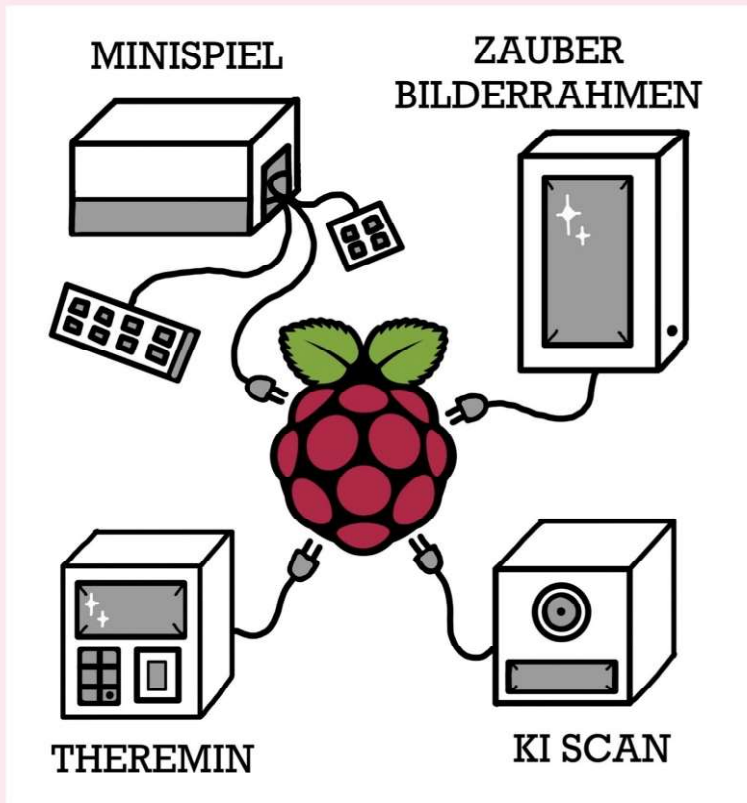


# Was ist ein Raspberry PI?

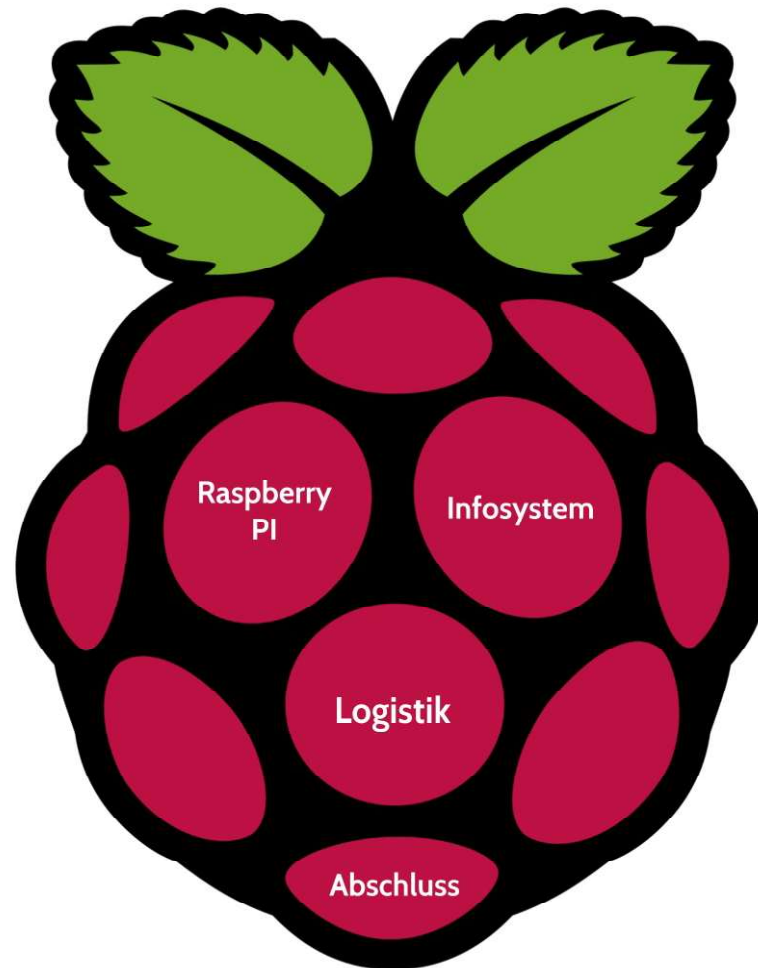
- Minicomputer
- zu Lern- und Demonstrationszwecken entwickelt
- Raspberry PI 4 Modell B



Unsere  
Projektideen



- Interaktives Design
- Transparente Gehäuse
- Leichte Bedienung
- Hohes Maß an Flexibilität

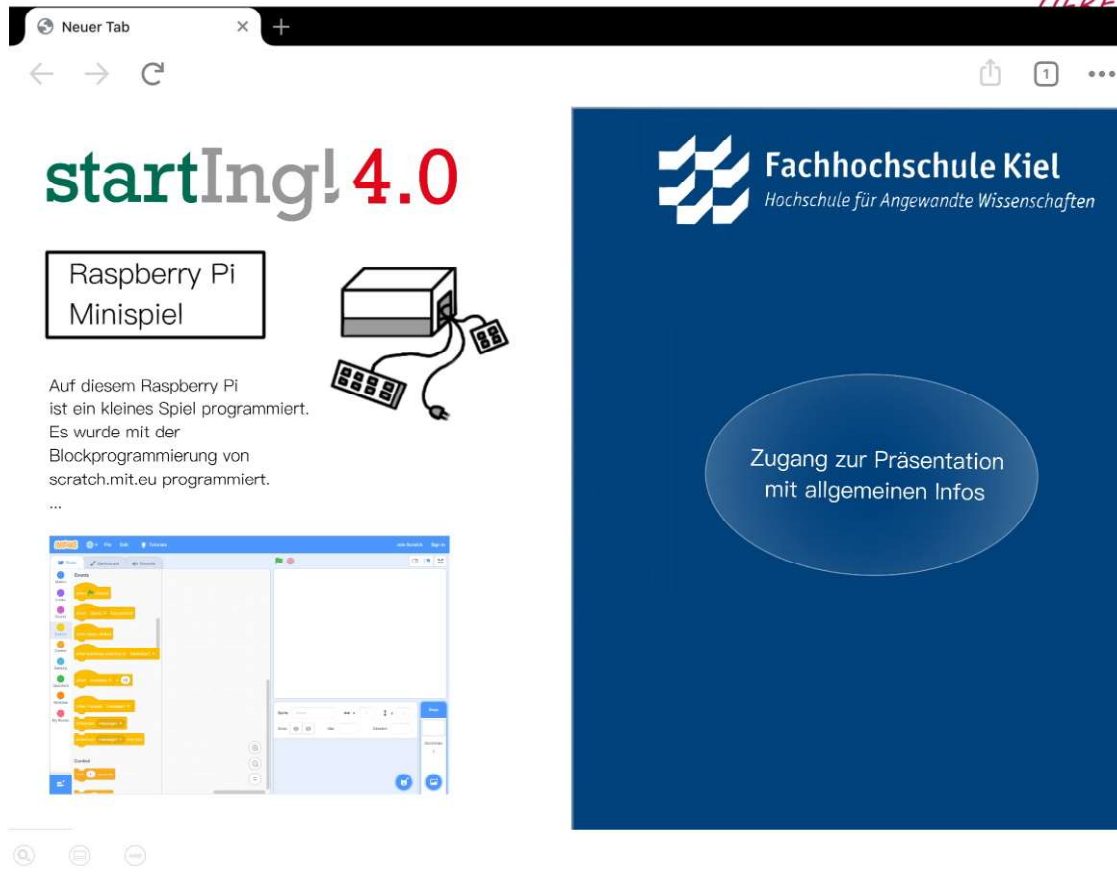


# Infos

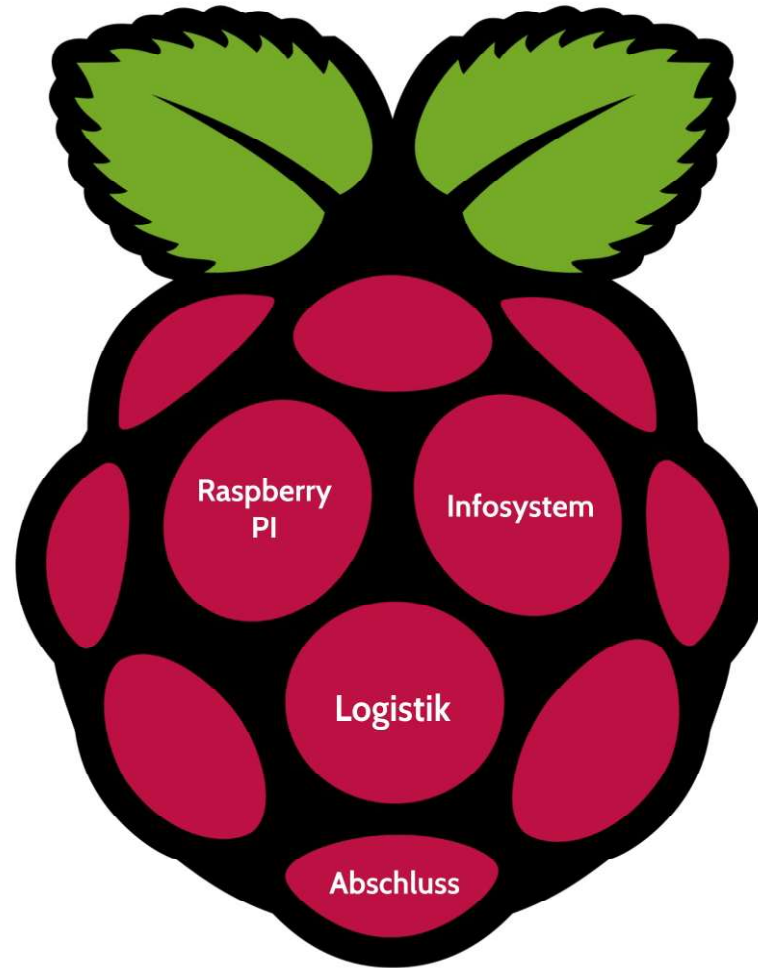
- Modern
- Umweltfreundlich
- Leicht zugänglich für Mitglieder unserer Zielgruppe



HERE SCHREIBT MAN MIT I UND E





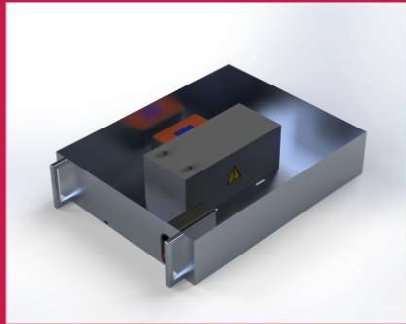




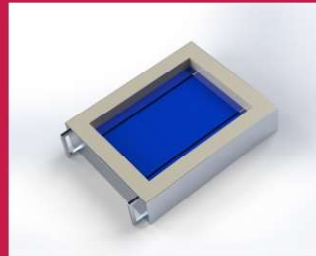
# Raumkonzept

Was ist zu verstauen?

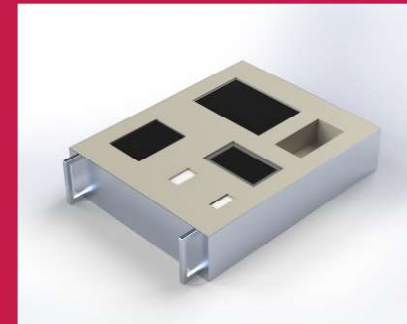
**Elektronik**



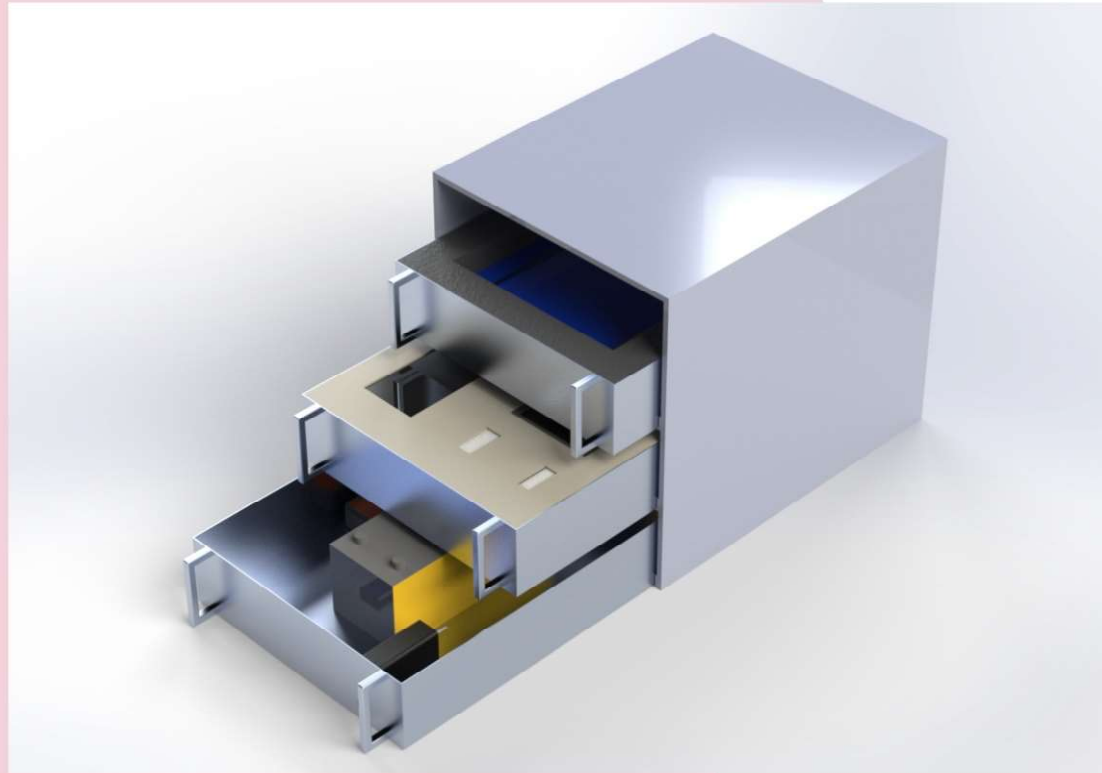
**Solarpanel**

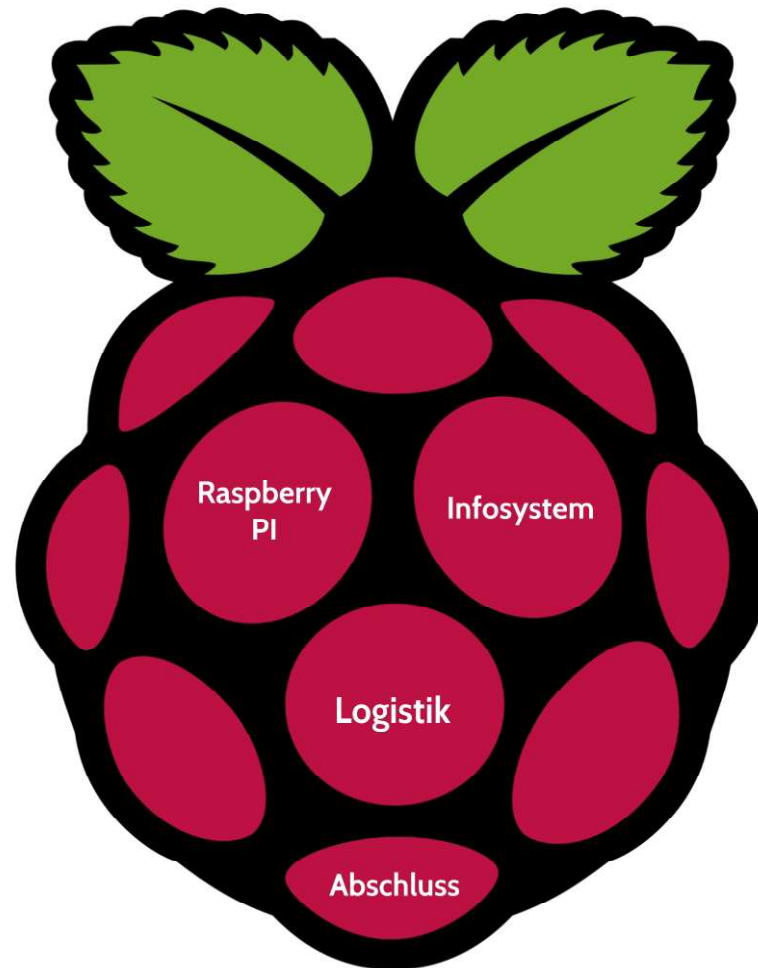


**Raspberry Pi's und Informationsmaterial**

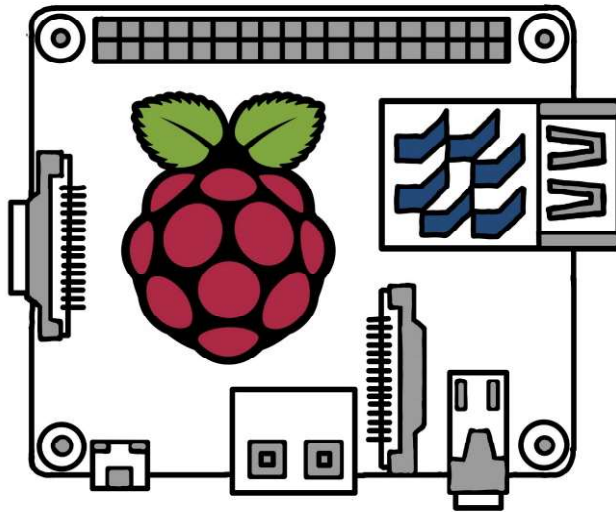


Einbau

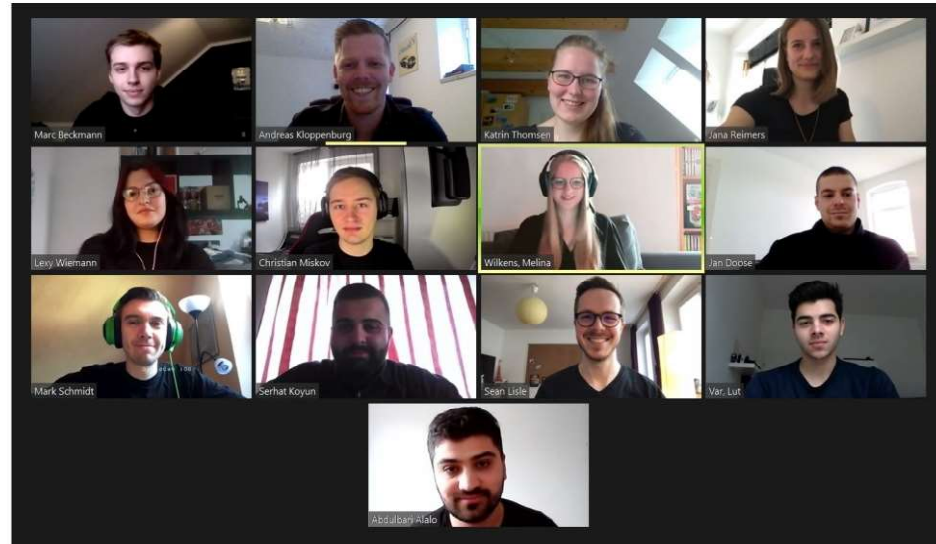




# VIELEN DANK FÜR IHRE AUFMERKSAMKEIT



Quellen



# Quellen

- [https://www.logo.wine/logo/Raspberry\\_Pi](https://www.logo.wine/logo/Raspberry_Pi) (06.05.21 11:51 Uhr)
- <https://pixabay.com/de/photos/raspberry-pi-computer-elektronik-572481/> (06.05.21, 13:33 Uhr)
- FH- und starting! - Logo aus den bereitgestellten Moodle-Materialien

